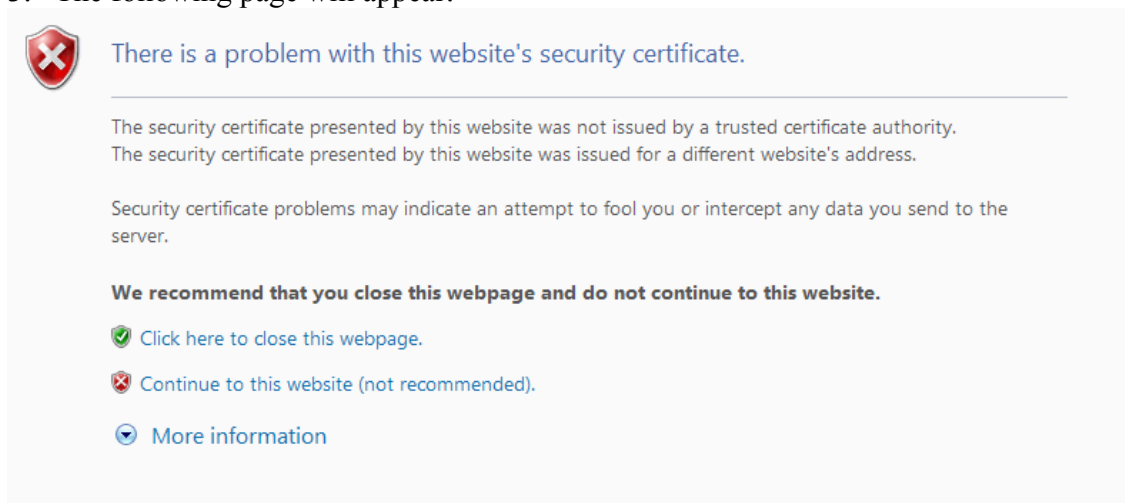


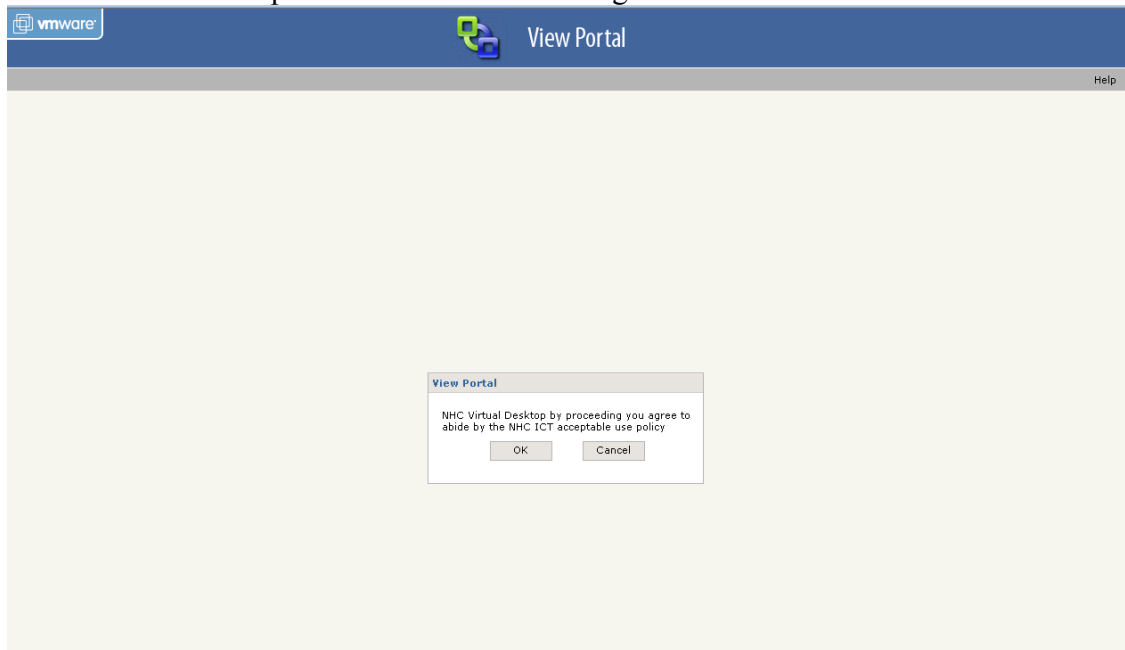
Remote Desktop Access

This short document will explain the steps required to connect a virtual desktop from any computer running MS Windows XP and IE7; these instructions are the same for other MS Windows versions and other versions of IE except MS Windows 7 running IE8 which is not currently supported. This system is used to connect to desktops when running a pc outside of the college network.

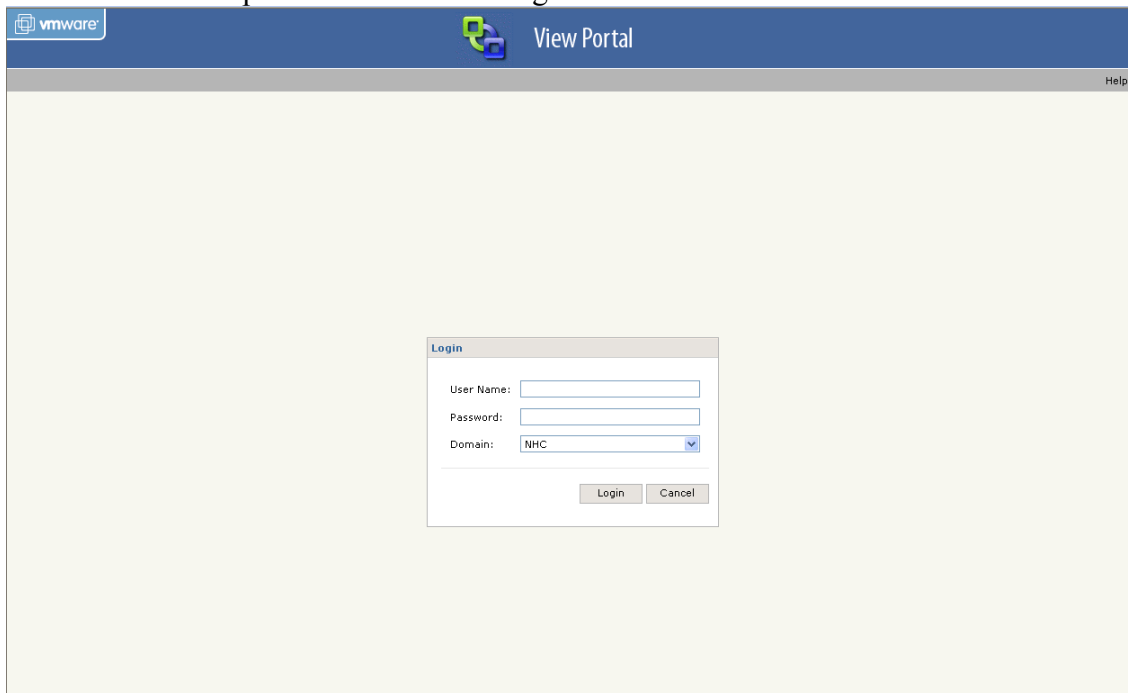
1. Connect to the internet
2. Access the following web site address <http://mydesktop.northhighland.ac.uk>
3. The following page will appear:



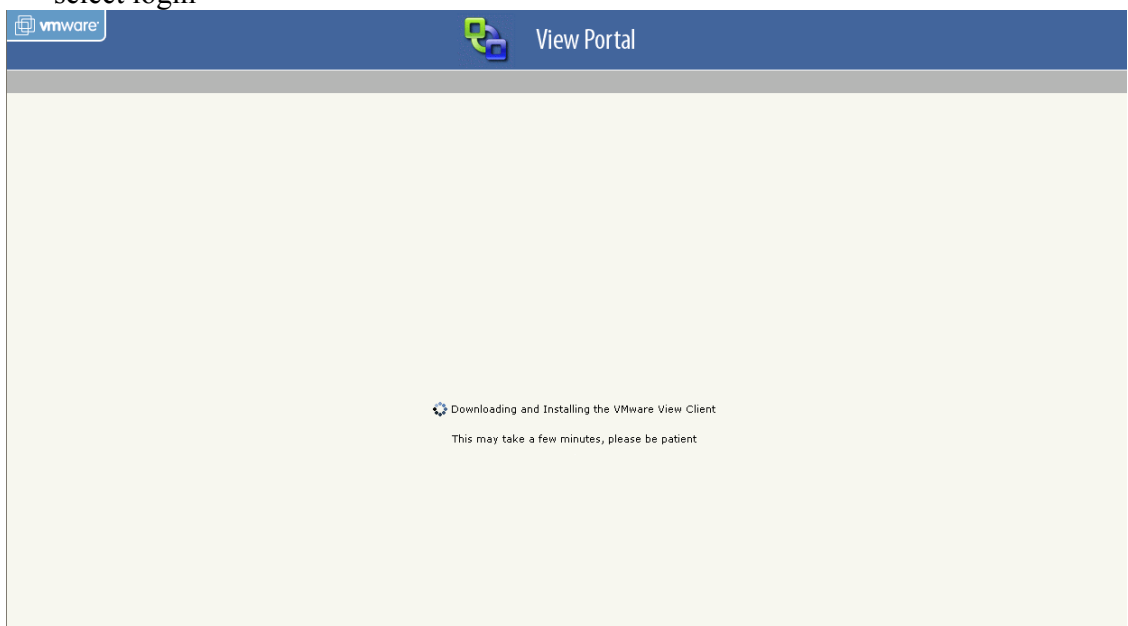
4. Select the option "Continue to this website (not recommended)"
5. You will then be presented with the following screen



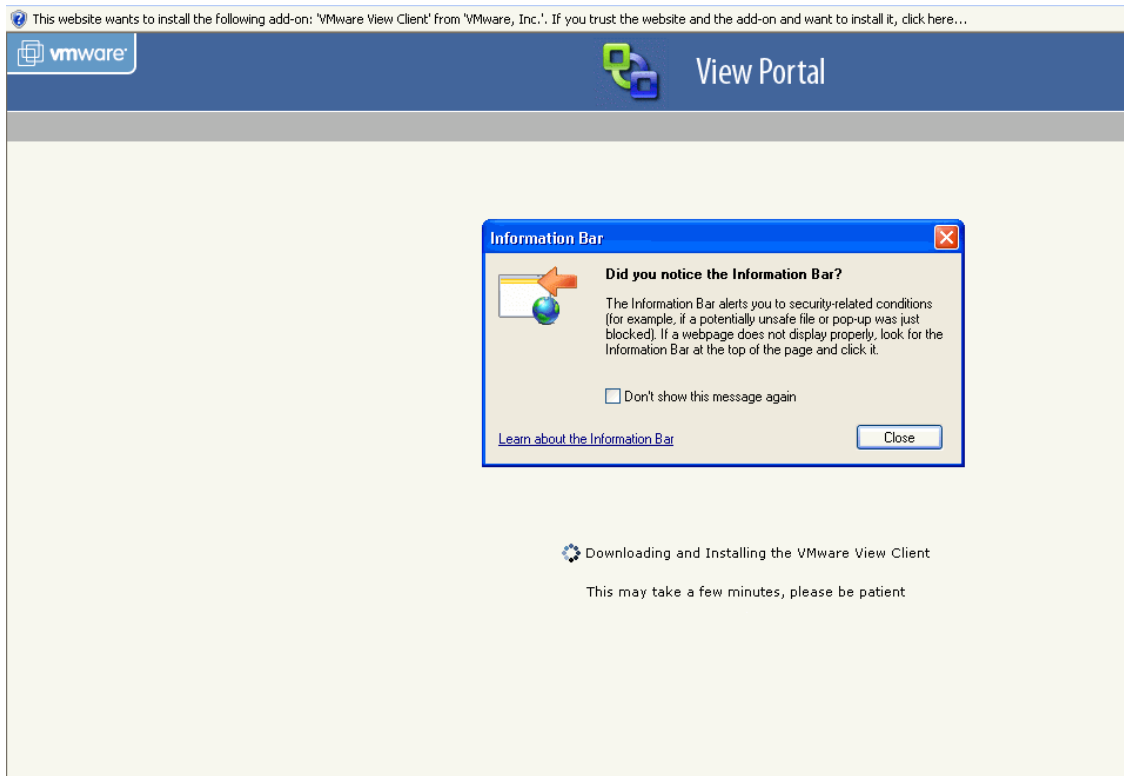
6. Select OK and proceed to the following screen



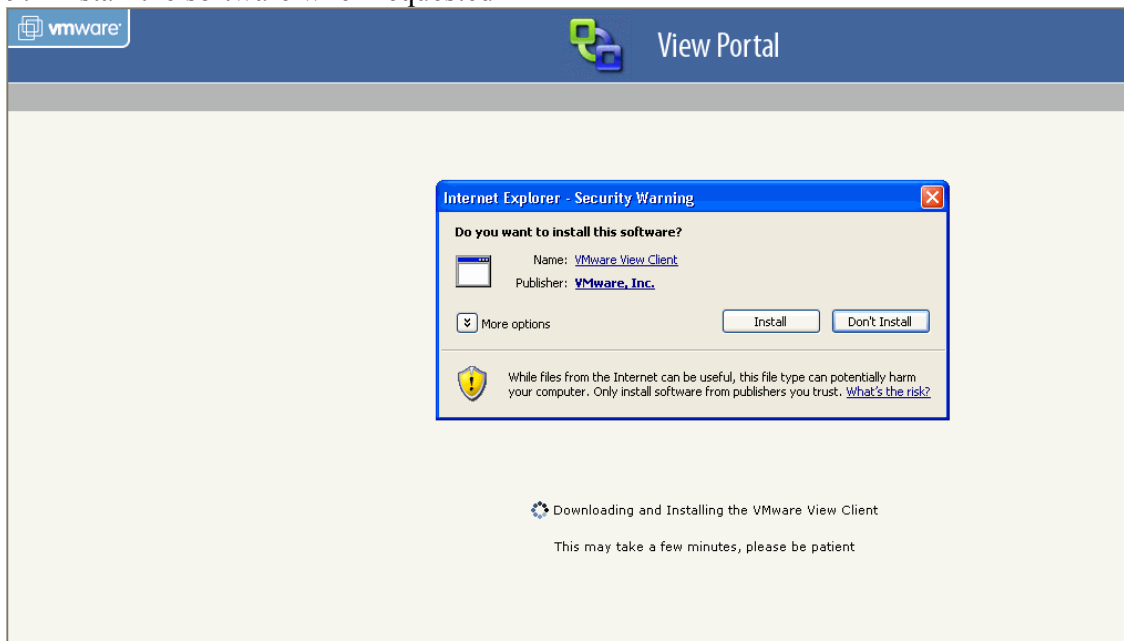
7. Enter your normal NHC login details and ensure that the Domain is set to NHC select login



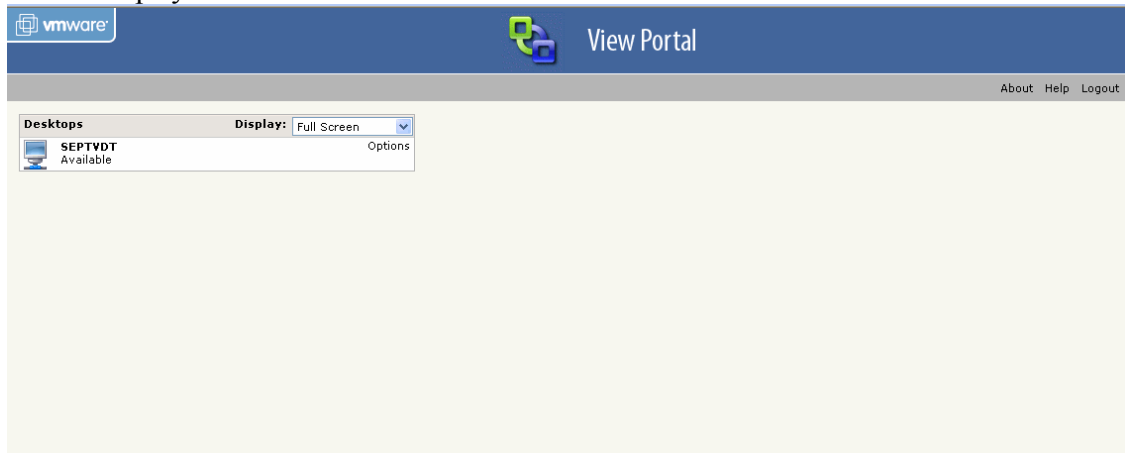
8. The VMview client will then be downloaded to your PC you may be asked to allow activex to be installed follow the instructions on the screen.



9. Install the software when requested



10. Select from the list one of the desktops available there is currently only one desktop system available called SEPTVDT



11. A normal NHC desktop will then open in full screen on your desktop, this will give you access to your normal files and folders but not all your applications, you will also gain access to all the local drives and printers connected to the physical PC you are using.
12. When finishing with this system please ensure you log off.

PLEASE NOTE THIS IS STILL A TEST SYSTEM AND ACCESS MAY BE REMOVED WITHOUT NOTICE